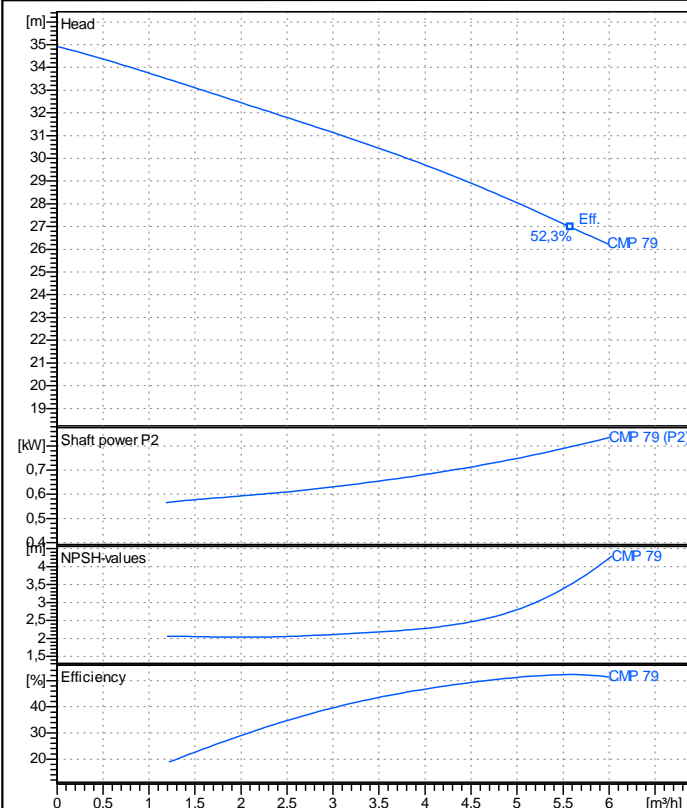


Receiver

From

Company name
Respons. Department
Person in charge
Phone number
Fax no
E-mail address



Operating data specification

Nominal flow	m³/h 0
Nominal head	m 0
Static head	m 0
NPSH - v value of plant	m 0
Inlet pressure	bar 0,09793
Fluid	Water, pure
Operating temperature t A	°C 20
Density at t A	kg/m³ 998,3
Kin. viscosity at t A	mm²/s 1,005

Pump

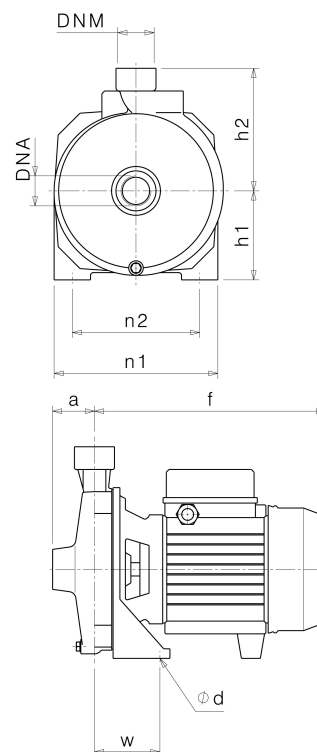
Pump name	CMP 79		
Size			
Design			
Speed rpm	2850	No of stages	1
Impeller type	Single vane impeller		
Flow	Nominal	m³/h	
	Max-	m³/h	5,99
	Min-	m³/h	0
Head	Nominal	m	
	Max-	m	34,9
	Min-	m	26,2
Head H(Q=0)		m	34,9
NPSH 3%		m	
Max. working pressure		bar	3,42
Shaft power		kW	
Efficiency		%	
Max absorbed power		kW	0,83506

Materials Pump

Shaft	Stainless steel AISI 420 (1.4028)		
Impeller	Thermoplastic resin		
Pump body	Cast iron EN-GJL-200		
Support	Aluminium		
OR	NBR Rubber		
Mechanical seal	BXPB (Gra/Cer/NBR)		

Dimensions in mm

a	46
DNA	G 1"
DNM	G 1"
f	254
h1	98
h2	135
n1	180
n2	140
od	9
w	72



Remarks:

Project	Project ID	Created by	Created on	Last update
			2019-02-13	