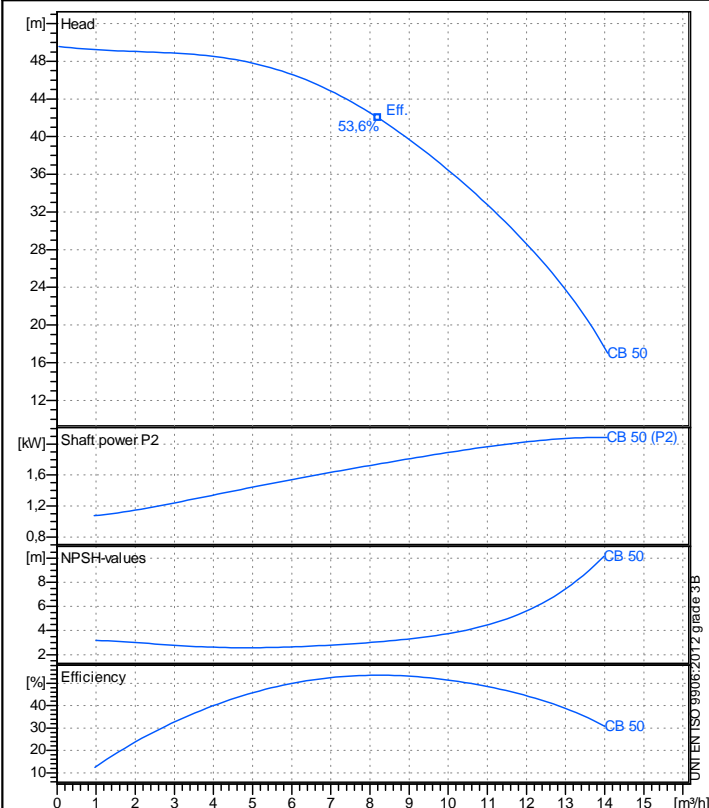


Receiver

From

Company name
Respons. Department
Person in charge
Phone number
Fax no
E-mail address



Operating data specification

Nominal flow	m³/h	0
Nominal head	m	0
Static head	m	0
NPSH - v value of plant	m	0
Inlet pressure	bar	0,09793
Fluid	Water, pure	
Operating temperature t A	°C	20
Density at t A	kg/m³	998,3
Kin. viscosity at t A	mm²/s	1,005

Pump

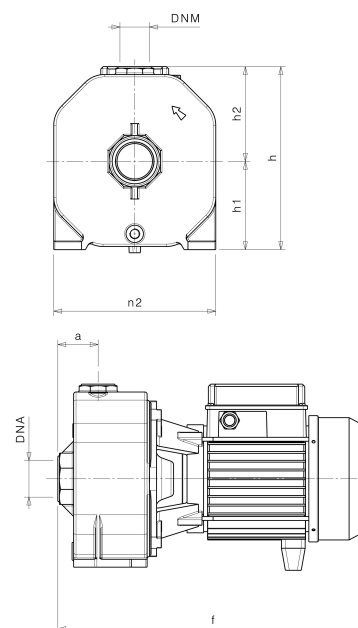
Pump name	CB 50		
Size			
Design			
Speed rpm	2900	No of stages	1
Impeller type			
Flow	Nominal	m³/h	
	Max-	m³/h	14,1
	Min-	m³/h	0,0526
Head	Nominal	m	
	Max-	m	49,6
	Min-	m	17
Head H(Q=0)	m	49,6	
NPSH 3%	m		
Max. working pressure	bar	4,86	
Shaft power	kW		
Efficiency	%		
Max absorbed power	kW	2,0838	

Materials Pump

Shaft	Stainless steel AISI 420 (1.4028)		
Impeller	Brass		
Pump body	Cast iron EN-GJL-200		
Support	Cast iron EN-GJL-200		
OR	NBR Rubber		
Mechanical seal	BXPB (Gra/Cer/NBR)		
Diffuser	Thermoplastic resin		

Dimensions in mm

a	51
DNA	G 1 1/2"
DNM	G 1"
f	393
h	232
h1	112
h2	120
n2	205



Remarks:

Project	Project ID	Created by	Created on	Last update
			2019-02-13	