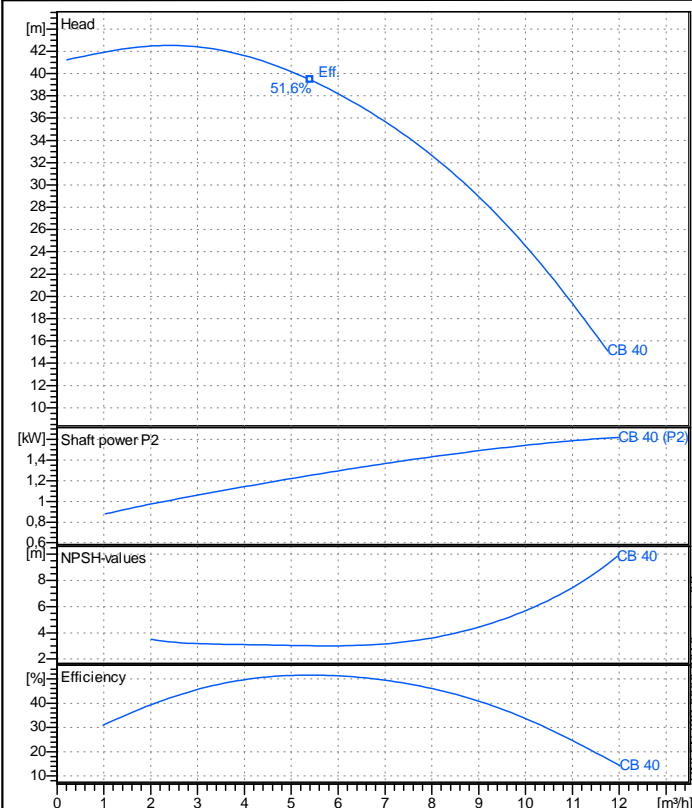


Receiver

From

Company name  
Respons. Department  
Person in charge  
Phone number  
Fax no  
E-mail address



### Operating data specification

Nominal flow	m³/h 0
Nominal head	m 0
Static head	m 0
NPSH - v value of plant	m 0
Inlet pressure	bar 0,09793
Fluid	Water, pure
Operating temperature t A	°C 20
Density at t A	kg/m³ 998,3
Kin. viscosity at t A	mm²/s 1,005

### Pump

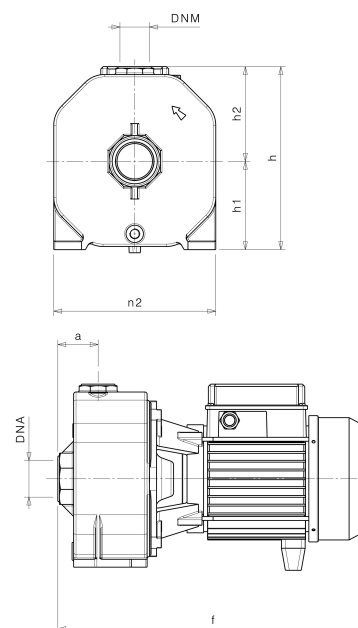
Pump name	CB 40		
Size			
Design			
Speed rpm	2900	No of stages	1
Impeller type			
Flow	Nominal	m³/h	
	Max-	m³/h	11,8
	Min-	m³/h	0,21
Head	Nominal	m	
	Max-	m	41,2
	Min-	m	15,1
Head H(Q=0)	m	41,1	
NPSH 3%	m		
Max. working pressure	bar	4,02	
Shaft power	kW		
Efficiency	%		
Max absorbed power	kW	1,6179	

### Materials Pump

Shaft	Stainless steel AISI 420 (1.4028)		
Impeller	Brass		
Pump body	Cast iron EN-GJL-200		
Support	Cast iron EN-GJL-200		
OR	NBR Rubber		
Mechanical seal	BXPg (Gra/Cer/NBR)		
Diffuser	Thermoplastic resin		

### Dimensions in mm

a	51
DNA	G 1 1/2"
DNM	G 1"
f	393
h	232
h1	112
h2	120
n2	205



Remarks:

Project	Project ID	Created by	Created on	Last update
			2019-02-13	