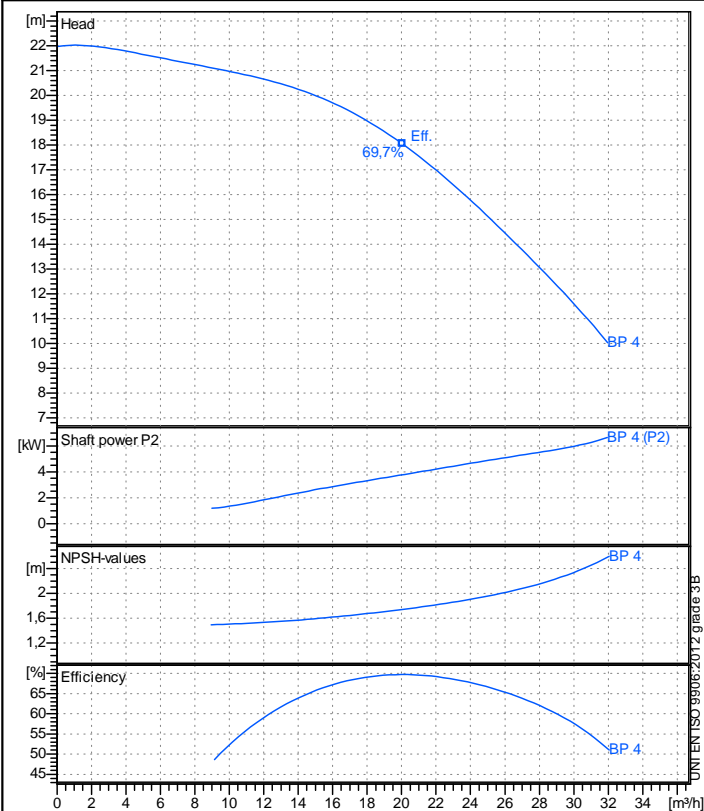


Receiver

From

Company name  
Respons. Department  
Person in charge  
Phone number  
Fax no  
E-mail address



### Operating data specification

Nominal flow	m³/h	0
Nominal head	m	0
Static head	m	0
NPSH - v value of plant	m	0
Inlet pressure	bar	0,09793
Fluid	Water, pure	
Operating temperature t A	°C	20
Density at t A	kg/m³	998,3
Kin. viscosity at t A	mm²/s	1,005

### Pump

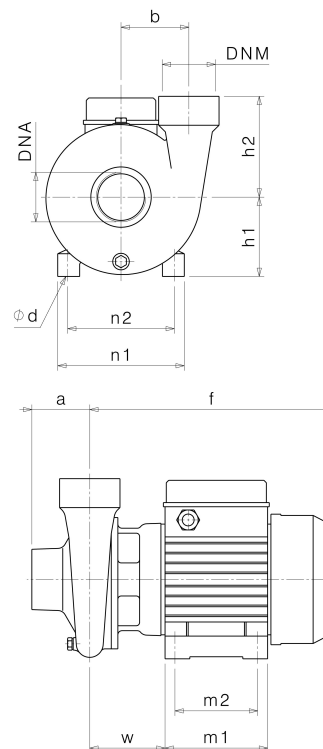
Pump name	BP 4		
Size			
Design			
Speed	rpm	2850	No of stages 1
Impeller type			
Flow	Nominal	m³/h	
	Max-	m³/h	32
	Min-	m³/h	0,0177
Head	Nominal	m	
	Max-	m	22
	Min-	m	10
Head H(Q=0)	m		
NPSH 3%	m		
Max. working pressure	bar		
Shaft power	kW		
Efficiency	%		
Max absorbed power	kW		

### Materials Pump

Shaft		Stainless steel AISI 420 (1.4028)		
Impeller		Carbon steel G20Mn5 (1.6620)		
Pump body		Cast iron EN-GJL-200		
Support		Cast iron EN-GJL-200		
OR		NBR Rubber		
Mechanical seal		BXPg (Gra/Cer/NBR)		

### Dimensions in mm

a	70
DNA	G 2"
DNM	G 2"
f	294
h1	96
h2	122
m1	124
m2	100
n1	152
n2	125
od	9
w	88



Remarks:

Project	Project ID	Created by	Created on	Last update
			2019-02-13	