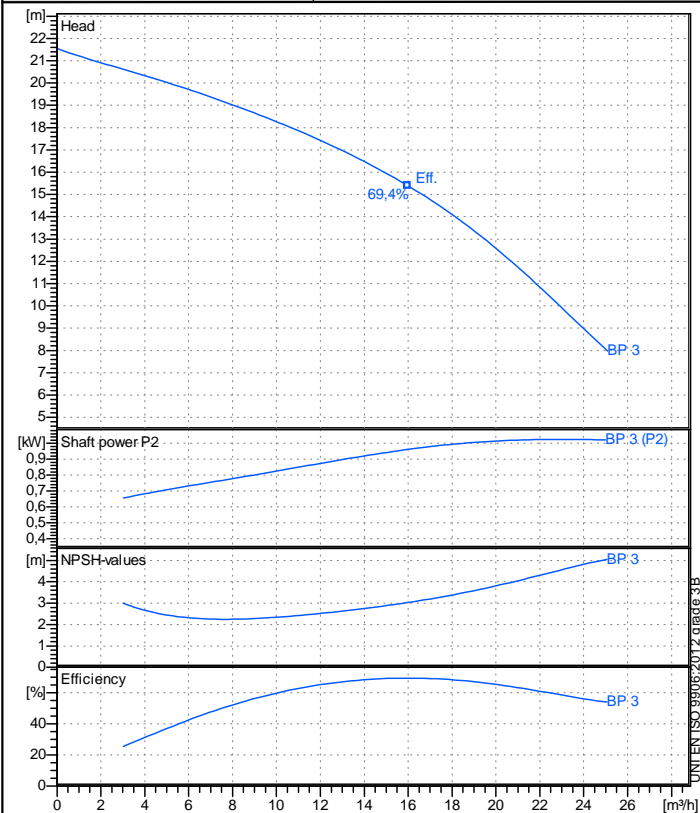


Receiver

From

Company name
Respons. Department
Person in charge
Phone number
Fax no
E-mail address



### Operating data specification

Nominal flow	m <sup>3</sup> /h	0
Nominal head	m	0
Static head	m	0
NPSH - v value of plant	m	0
Inlet pressure	bar	0,09793
Fluid	Water, pure	
Operating temperature t A	°C	20
Density at t A	kg/m <sup>3</sup>	998,3
Kin. viscosity at t A	mm <sup>2</sup> /s	1.005

**Pump**

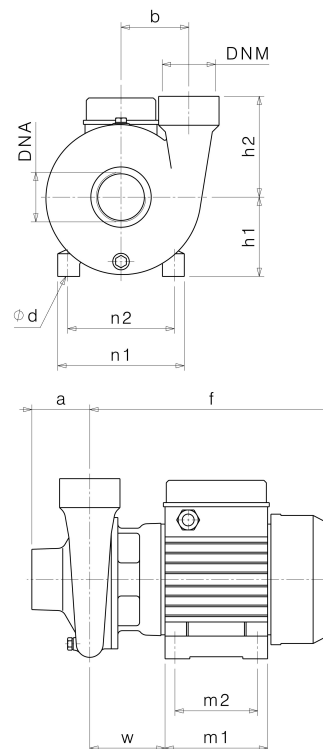
Pump name		BP 3	
Size			
Design			
Speed      rpm	2850	No of stages	1
Impeller type			
Flow	Nominal	m³/h	
	Max-	m³/h	25,1
	Min-	m³/h	0
Head	Nominal	m	
	Max-	m	21,5
	Min-	m	7,97
Head H(Q=0)		m	21,5
NPSH 3%		m	
Max. working pressure		bar	2,11
Shaft power		kW	
Efficiency		%	
Max absorbed power		kW	1,0247

## Materials Pump

Shaft		Stainless steel AISI 420 (1.4028)		
Impeller		Carbon steel G20Mn5 (1.6620)		
Pump body		Cast iron EN-GJL-200		
Support		Cast iron EN-GJL-200		
OR		NBR Rubber		
Mechanical seal		BXPg (Gra/Cer/NBR)		
<b>Motor</b>		Frame size	80	
Manufacturer / Type		SAER 80 2 - 0,75 3~		
Rated power	kW	0,75	Efficiency 4/4	0 %
Electric current	A	2,8 A	Speed rpm	2950
Electric voltage	V	400 V	3~ Hz	50
Starting mode		Unknown		
Degree of protection		IP 44	Insulation class	F

**Dimensions in mm**

a	70
DNA	G 2"
DNM	G 2"
f	294
h1	96
h2	122
m1	124
m2	100
n1	152
n2	125
od	9
w	88



Remarks:

Project	Project ID	Created by	Created on <b>2019-02-13</b>	Last update
---------	------------	------------	---------------------------------	-------------