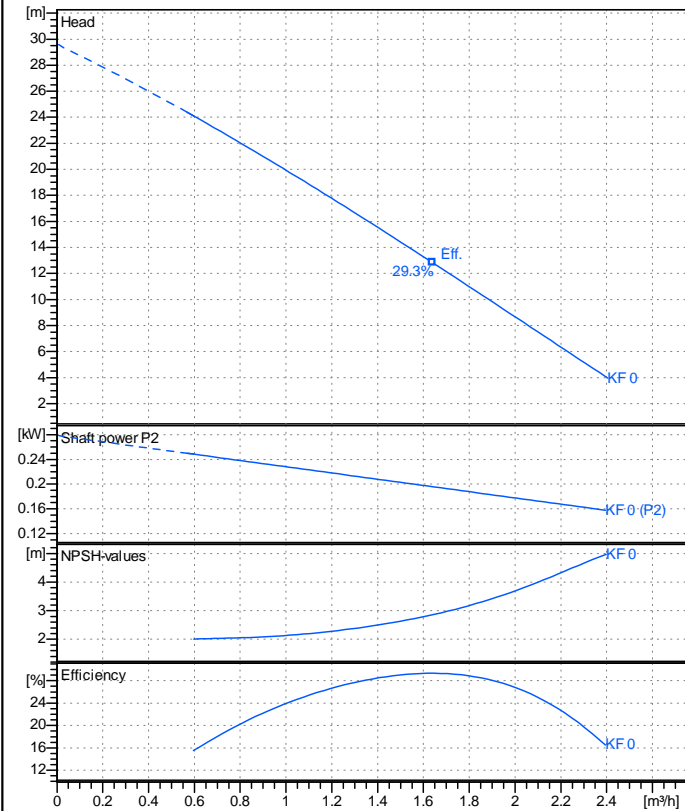


Receiver

From

Company name  
Respons. Department  
Person in charge  
Phone number  
Fax no  
E-mail address



### Operating data specification

Nominal flow	m³/h 0
Nominal head	m 0
Static head	m 0
NPSH - v value of plant	m 0
Inlet pressure	bar 0.09793
Fluid	Water, pure
Operating temperature t A	°C 20
Density at t A	kg/dm³ 0.9983
Kin. viscosity at t A	mm²/s 1.005

### Pump

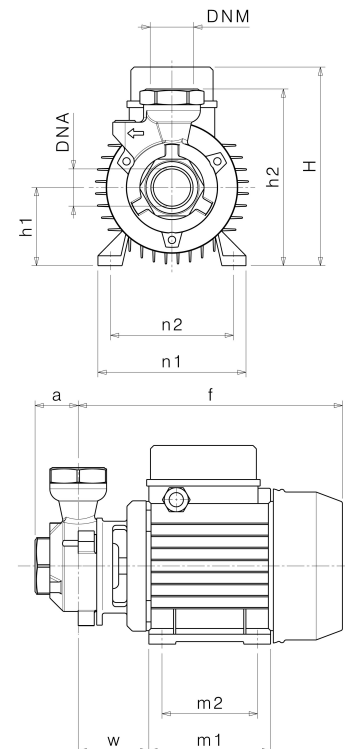
Pump name	KF 0		
Size			
Design			
Speed 1/min	2850	No of stages	1
Impeller type	Peripheral impeller		
Flow	Nominal	m³/h	
	Max-	m³/h	2.4
	Min-	m³/h	0.596
Head	Nominal	m	
	Max-	m	24.1
	Min-	m	3.96
Head H(Q=0)	m	29.6	
NPSH 3%	m		
Max. working pressure	bar	2.9	
Shaft power	kW		
Efficiency	%		
Max absorbed power	kW	0.24846	

### Materials Pump

Shaft	Stainless steel AISI 420 (1.4028)		
Impeller	Brass		
Pump body	Cast iron EN-GJL-200		
Support	Cast iron EN-GJL-200		
OR	NBR Rubber		
Mechanical seal	BXPB (Gra/Cer/NBR)		

### Dimensions in mm

a	35
DNA	G 1"
DNM	G 1"
f	215
H	166
h1	63
h2	143
m1	100
m2	80
n1	120
n2	100
od	7
w	60



Remarks:

Project	Project ID	Created by	Created on	Last update
			2019-02-26	